

# Nanaimo Regional General Hospital

## Master Site Plan

Presentation to the NRHD

Chris Sullivan

Director, Capital Planning

March 27, 2012

# What is a Master Site Plan?

- ◆ Role and scope of services
- ◆ Site assessment
- ◆ Compare existing buildings to future needs
- ◆ Potential options

# Role of Regional Hospital

- ◆ Only designated regional hospital
- ◆ Core specialty services
- ◆ More sub-specialties than community hospitals

# What was the outcome of Role & Scope of Service Review?

- ◆ Providing the right services
- ◆ Regional role can be further developed
- ◆ Need to increase capacity

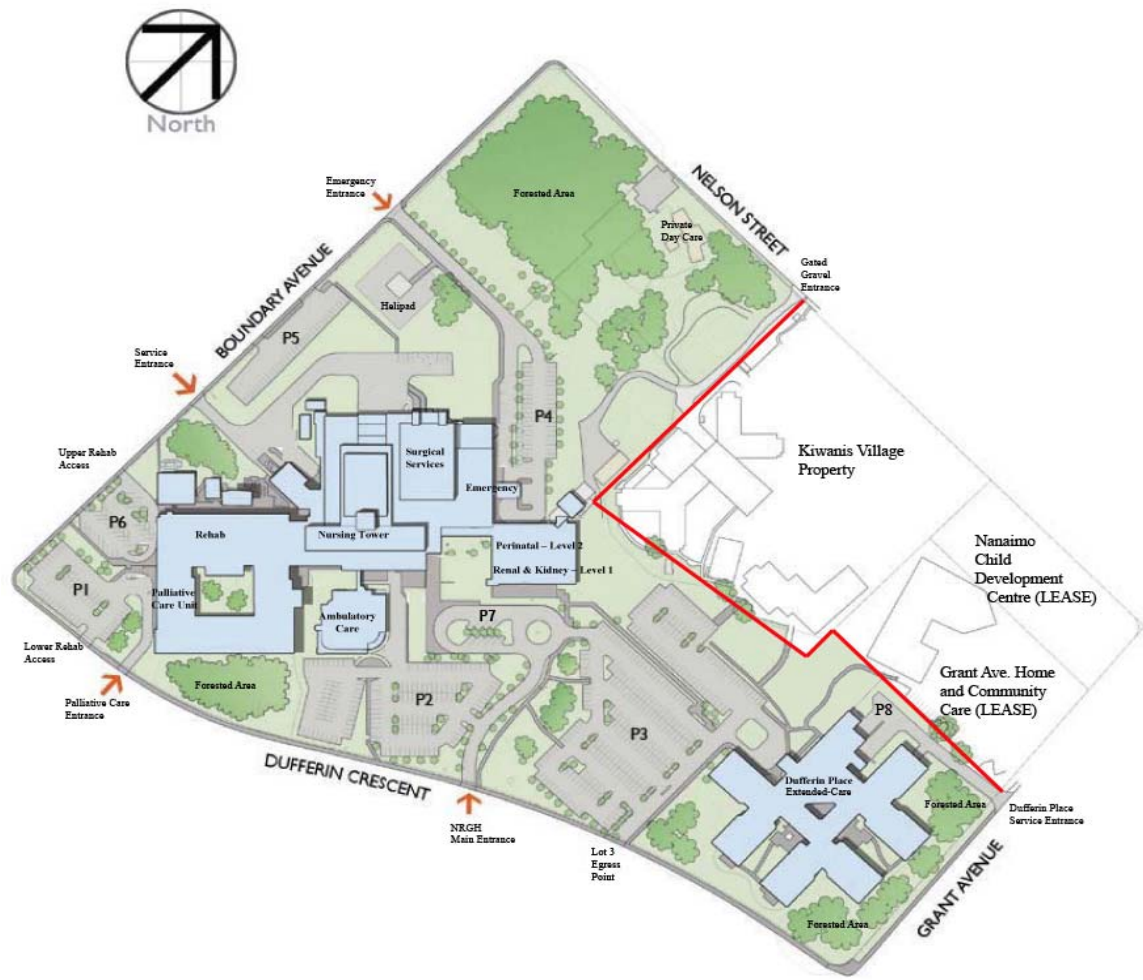
# How much additional capacity?

- ◆ Existing Building
  - ▶ 35,550 m<sup>2</sup>
- ◆ Desired Expansion Need to 2021
  - ▶ 54,390 m<sup>2</sup>
- ◆ Increase of 18,840 m<sup>2</sup> (35%)

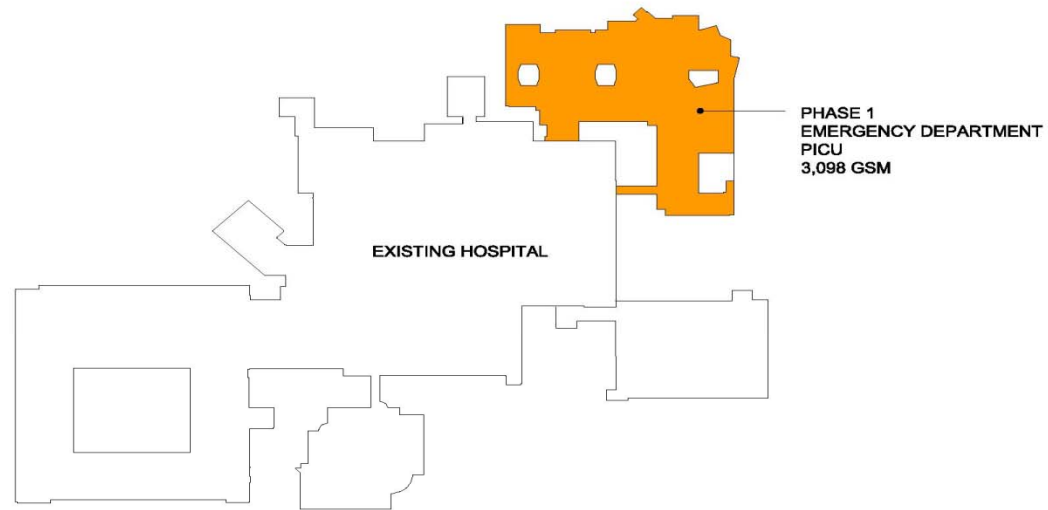
# Demonstration Plan

- ◆ Based on critical principles including:
  - ▶ Identifiable entries with easy access to parking
  - ▶ Intuitive wayfinding
  - ▶ Separation of flows
  - ▶ Zoning of services
  - ▶ Layouts that achieve operational efficiency
  - ▶ Providing flexible futures

# Existing Site Plan



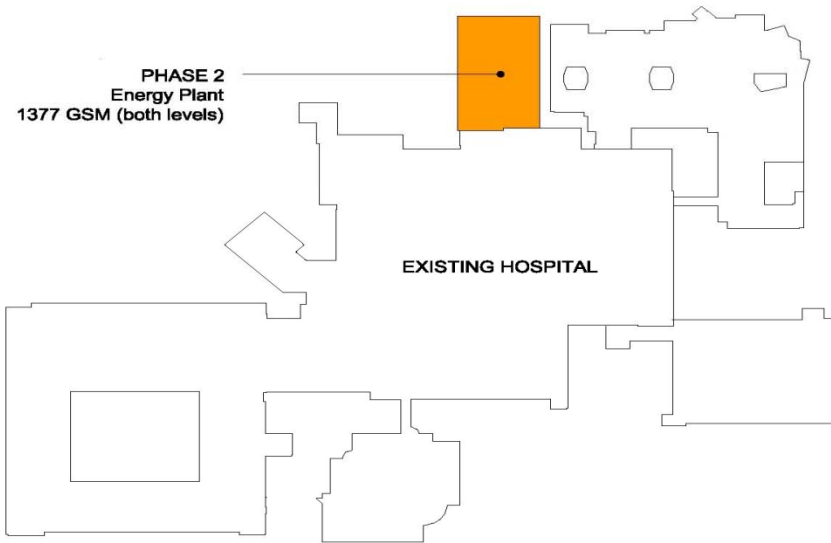
# Phase 1 New ED/PES/PIC



PHASE 1

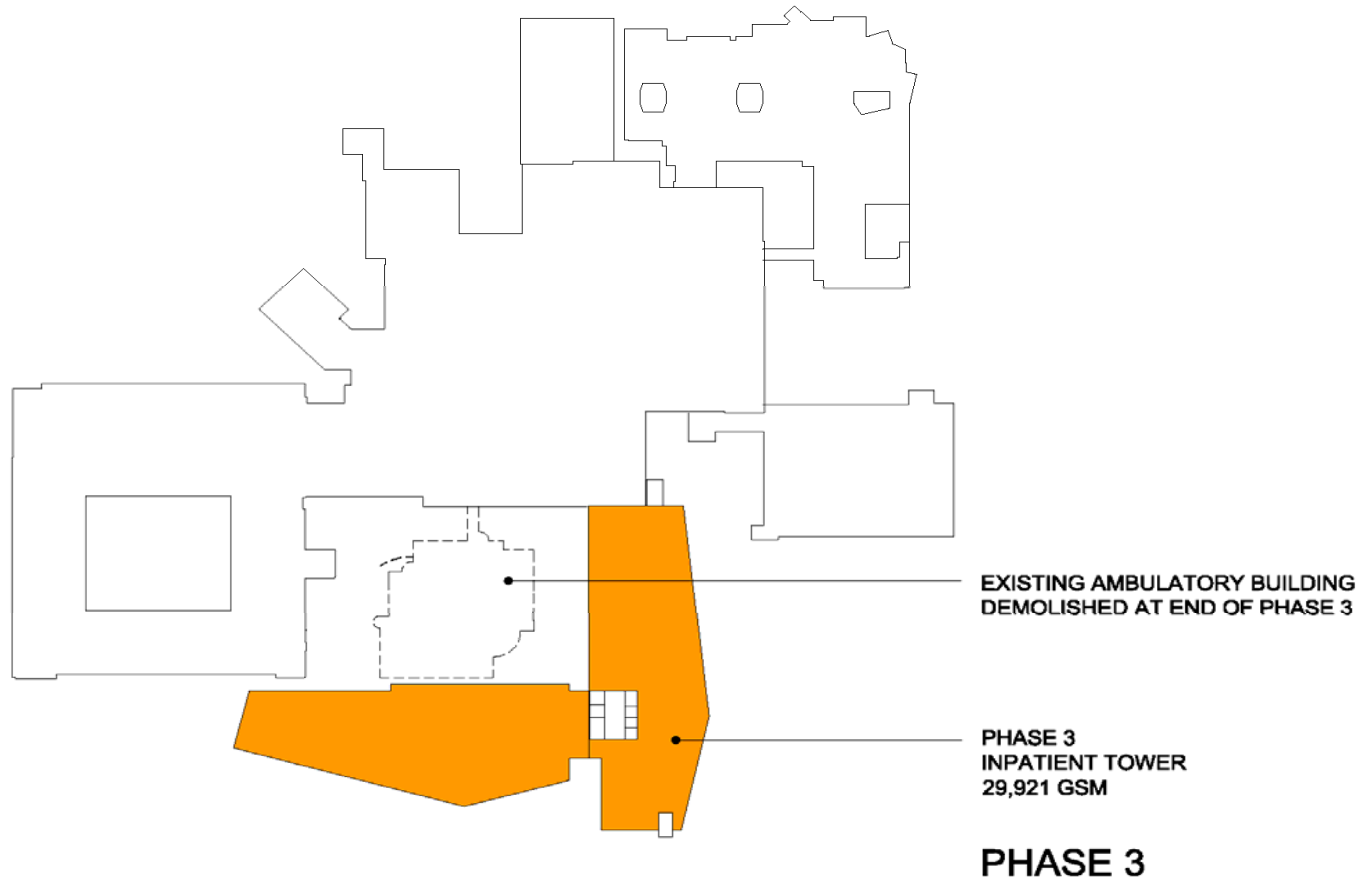


# Phase 2 Energy Plant Expansion

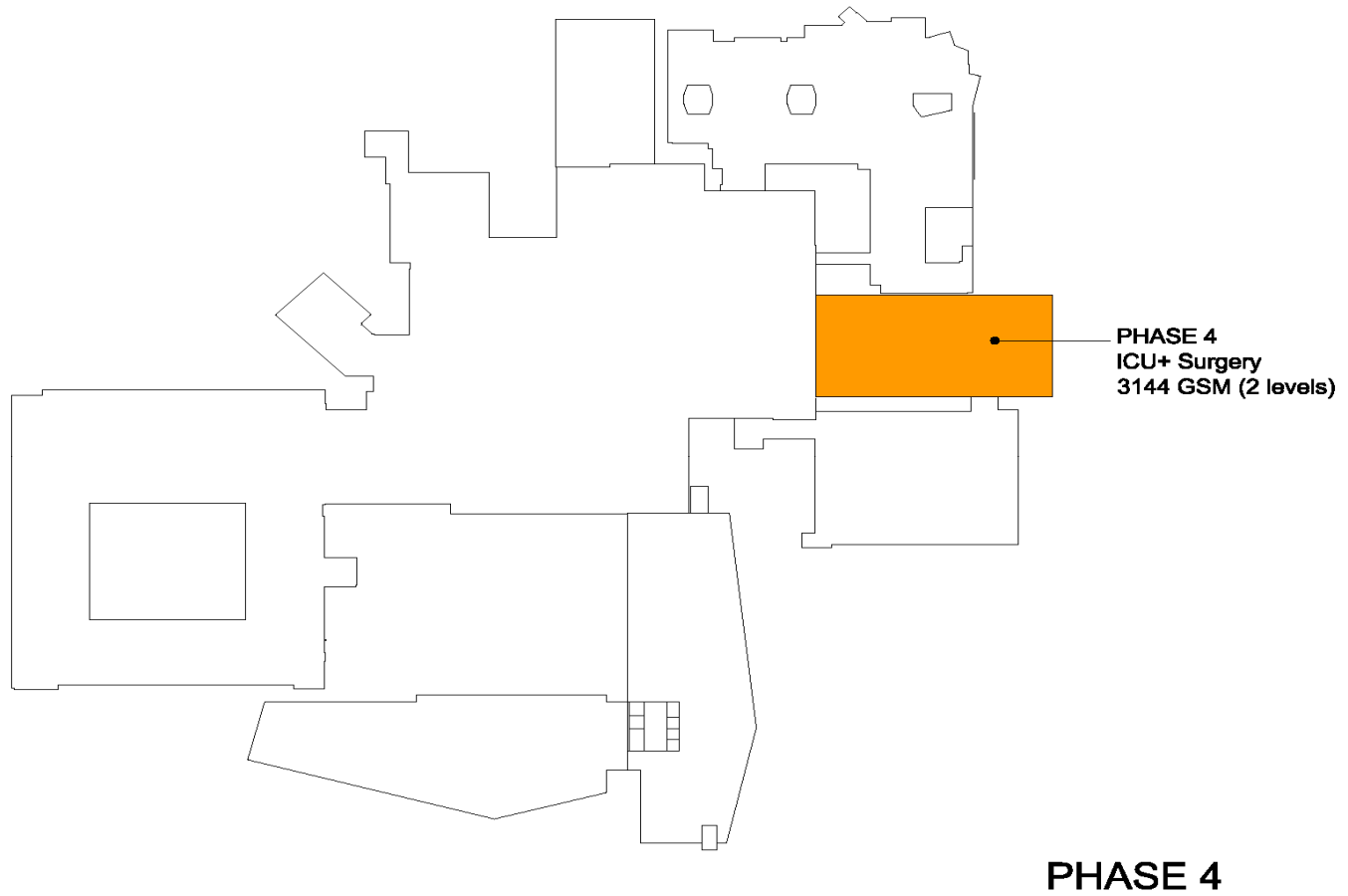


PHASE 2

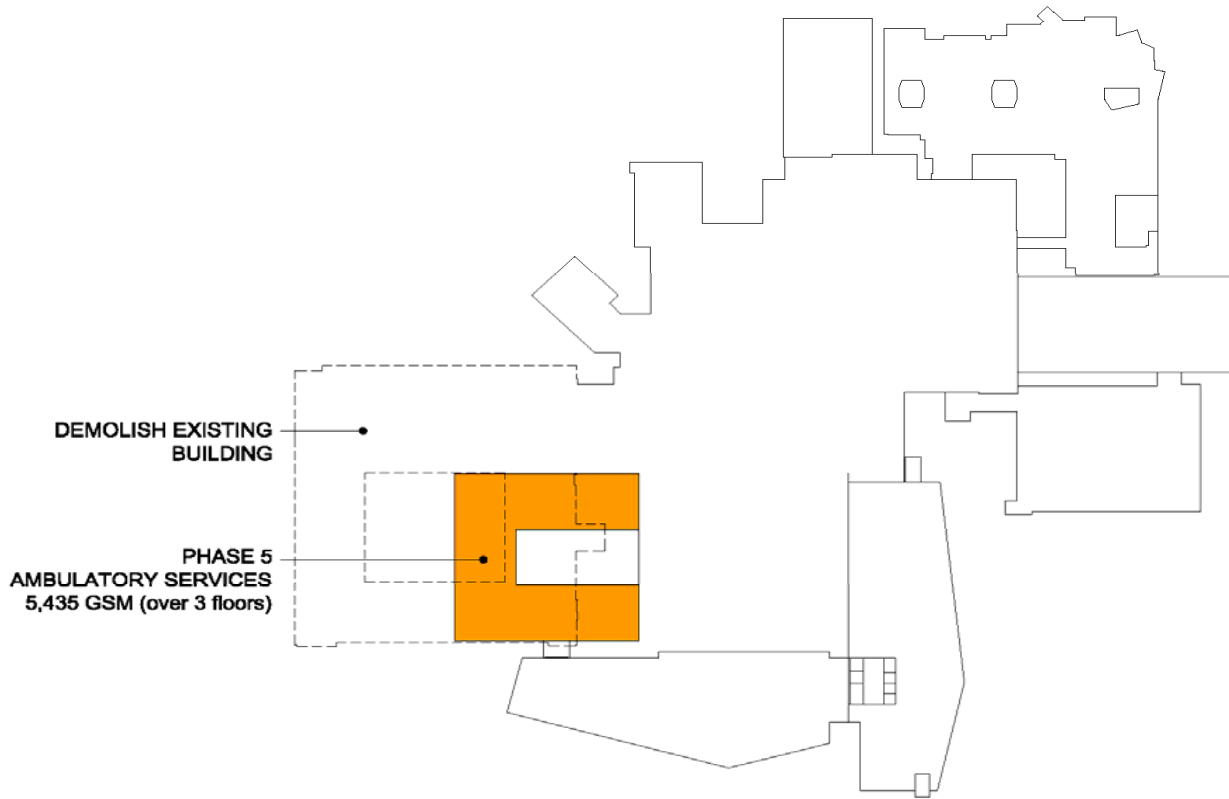
# Phase 3 Inpatient Tower



# Phase 4 ICU and Surgery Expansion

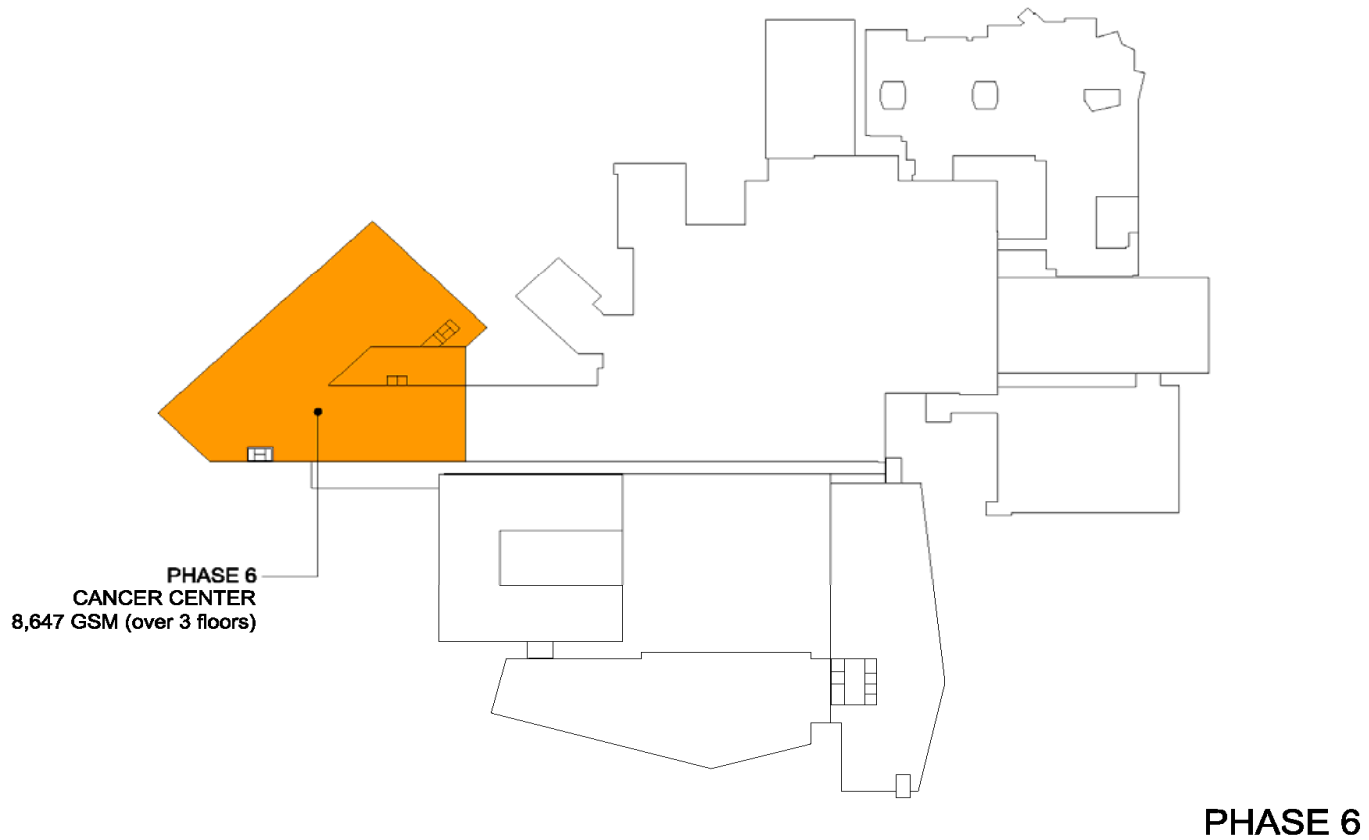


# Phase 5 Ambulatory Services

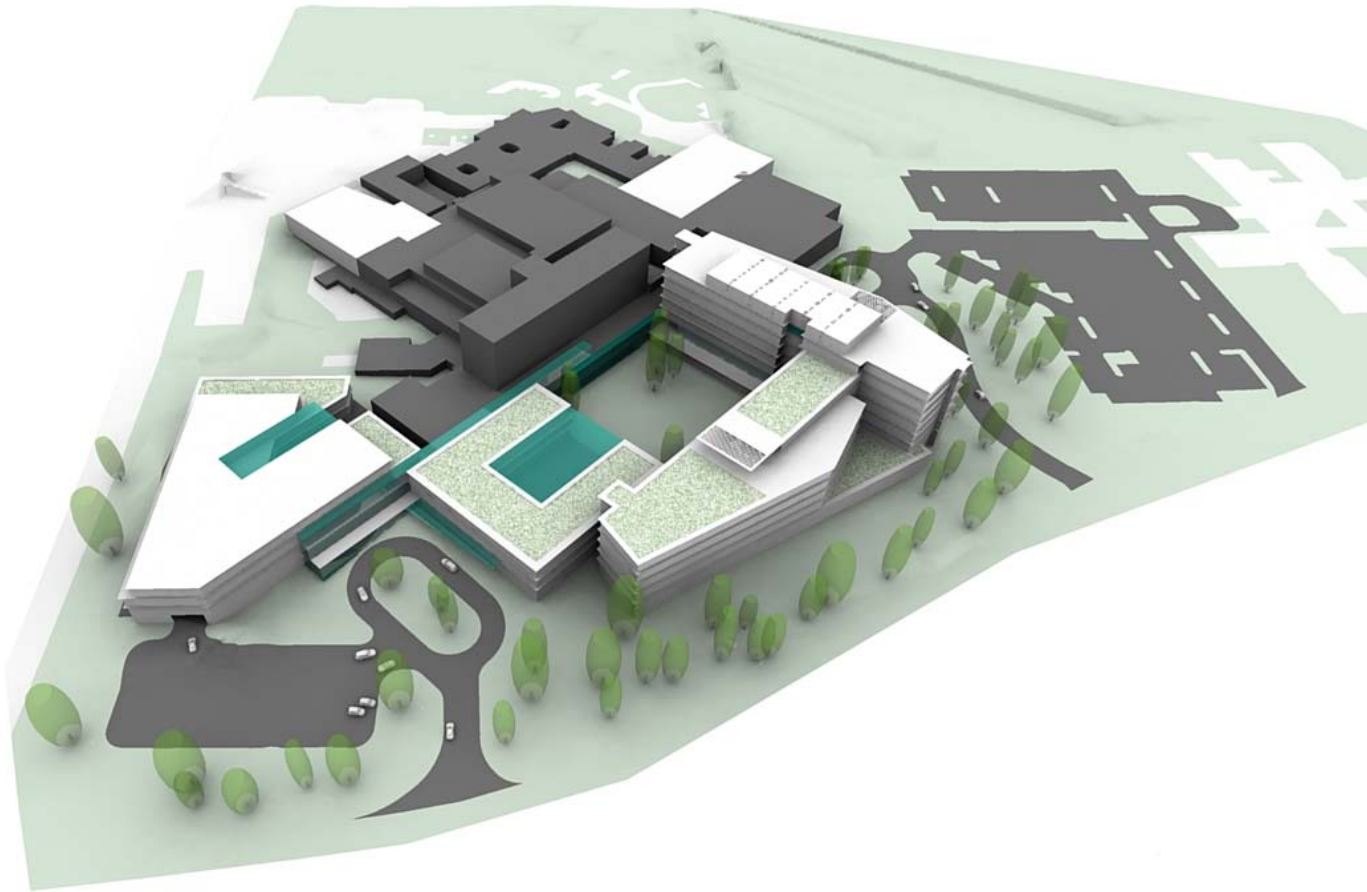


PHASE 5

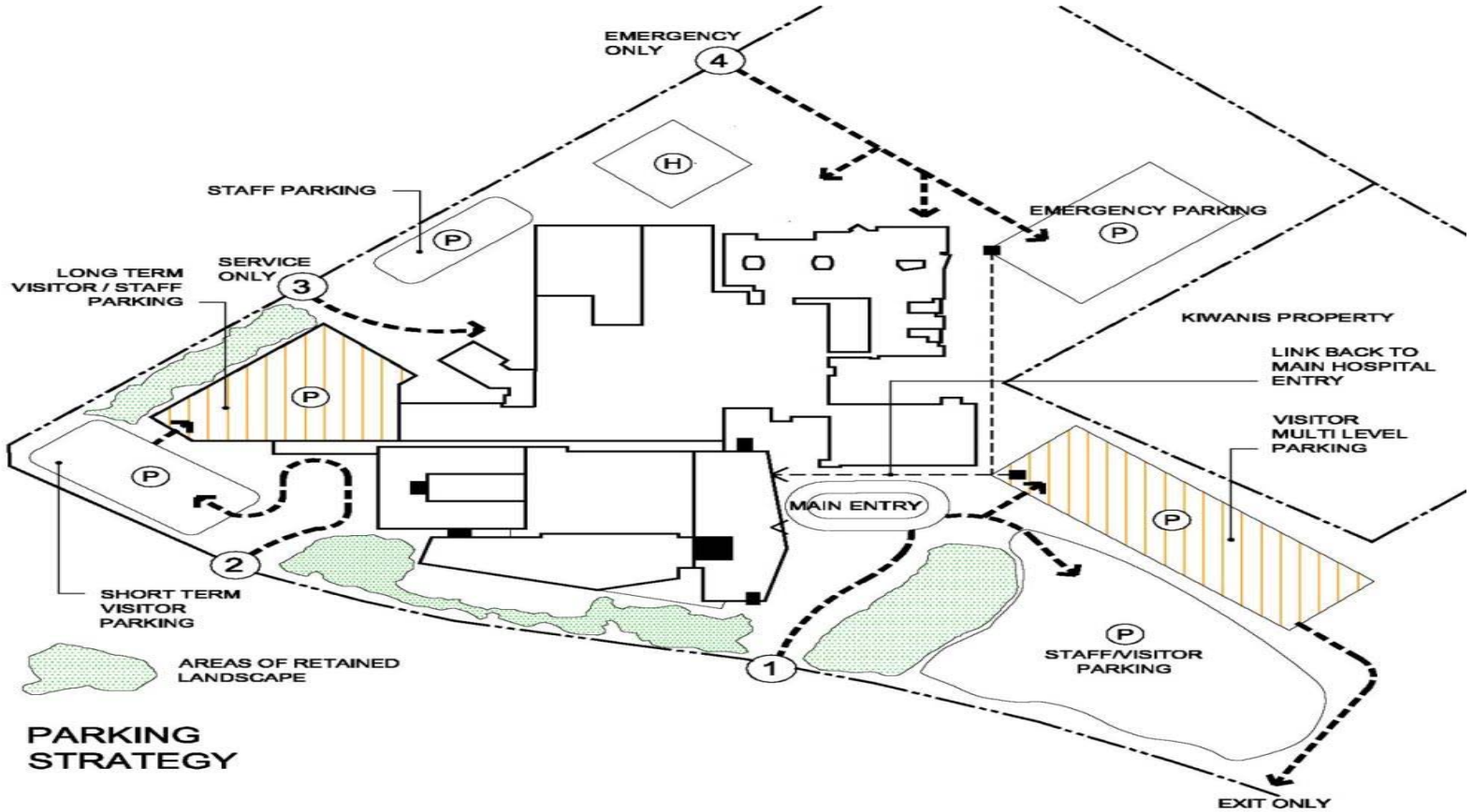
# Phase 6 Cancer Centre



# Massing Model



# Parking Strategy



# What are the next steps?

## ◆ Consultation

- ▶ ED/EMD Committee
- ▶ Capital Committee
- ▶ NRGH physicians and staff
- ▶ Nanaimo Regional Hospital District
- ▶ Nanaimo Foundation & Auxiliary
- ▶ Ministry of Health



# Project Approvals

- ◆ VIHA major capital project priority
  - ▶ Energy Plant Expansion
  - ▶ Inpatient Tower
  - ▶ ICU and Surgery Expansion

# Project Approvals

- ◆ Provincial prioritization process
- ◆ Timing to be determined